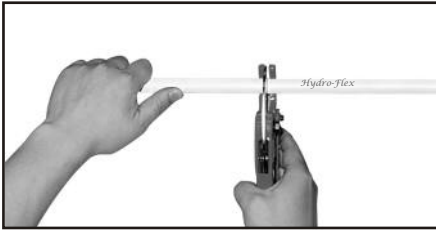


Installation Instructions

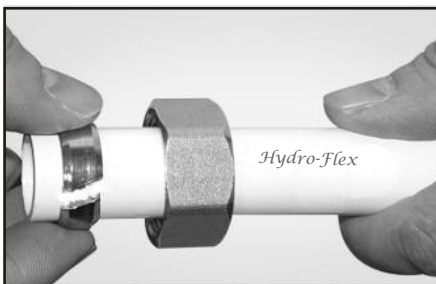
Hydro-Flex PEX-AL-PEX Compression Fittings



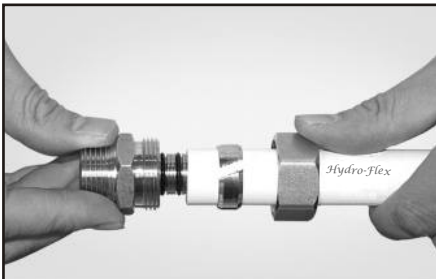
Cut the tubing squarely. Be sure you have an even cut without any burrs or irregular shape. An uneven cut will not allow the fitting to seal properly.



Slide the proper size reamer tool into the cut end of the tubing. Turn the reamer at least two (2) revolutions. The reamer is performing two functions: rounding the cut end of the tubing and cutting a small chamfer groove on the upper inside of the tubing end. This groove allows the fitting to slide into the pipe without rolling the O-rings.



Slide the nut and compression crimp ring over the cut end of the tubing. Insert the fitting body into the end of the tubing all the way to the fitting shoulder.



Slide the compression crimp ring and nut over the end of the tubing.



Using a wrench, tighten the nut until no threads are showing on the fitting body,

Hydro-Air Systems, Inc. • 9501 Susan Avenue, SE • Albuquerque, NM 87123 • 866-812-3352